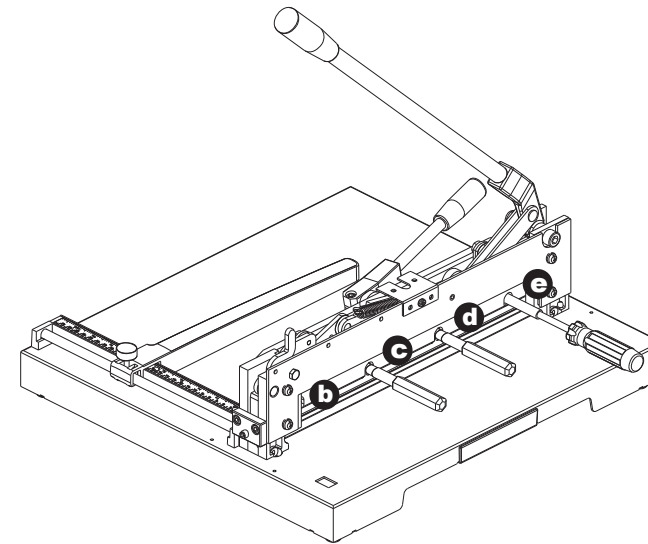
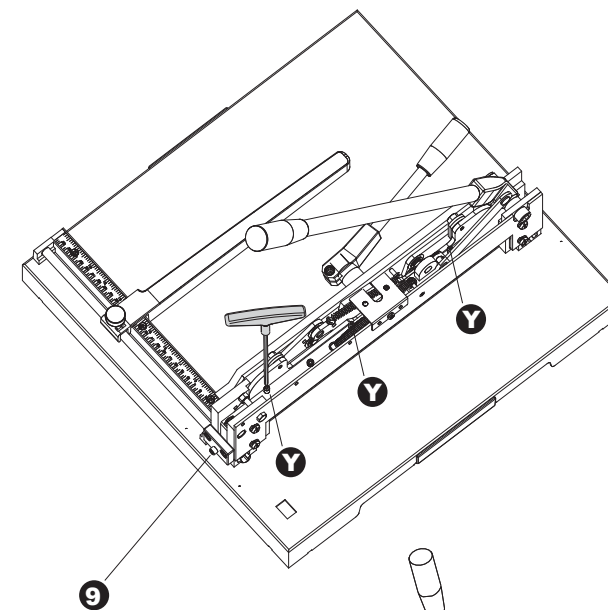


User's Guide

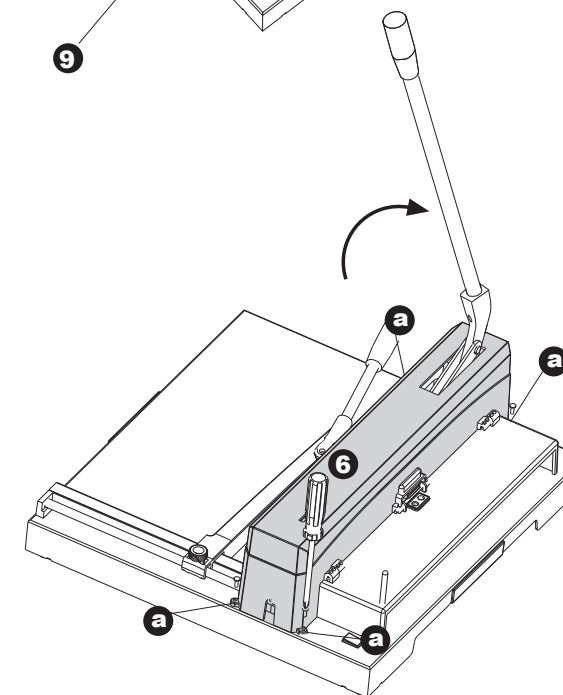
13943 Power Paper Trimmer



- (6) Place a new knife into the knife carrier, and fix it properly with the knife holders
- (7) Fasten the screws on **b** and **e**. And then, take away the knife holders. Next, Screw on **c** and **d**



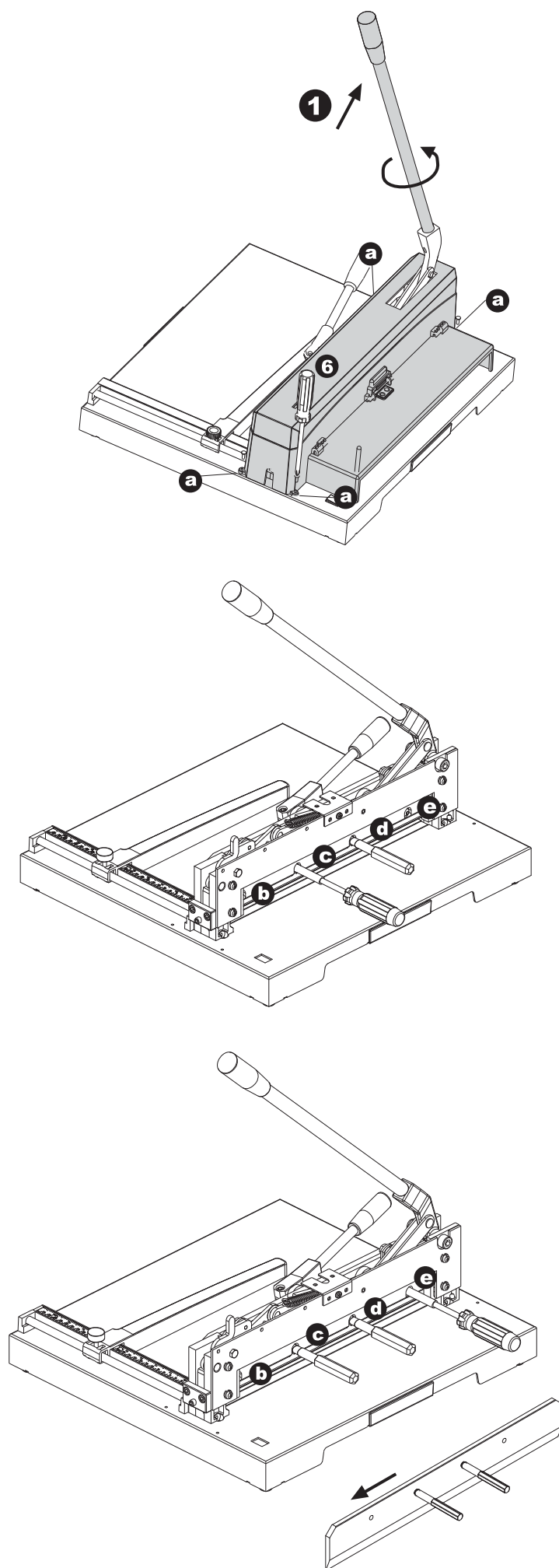
- (8) Turn the knife adjustment **9** to the right (-) until you have a visible ray of light between the knife edges and the cutting stick.
- (9) Make the knife touch the cutting stick flatly by means of the adjusting device **Y**
- (10) Have a trial cut with one sheet of paper after all procedures.
- (11) If the paper is not cut through totally, adjust the knife by **9** and **Y** .



- (12) Assemble the hand guard and the cover by way of screwing on **a** in the corners of the cover.

Notice: **9** is for a minor up-down adjustment in the knife.
Y is for a horizontal adjustment of the knife.

INDEX



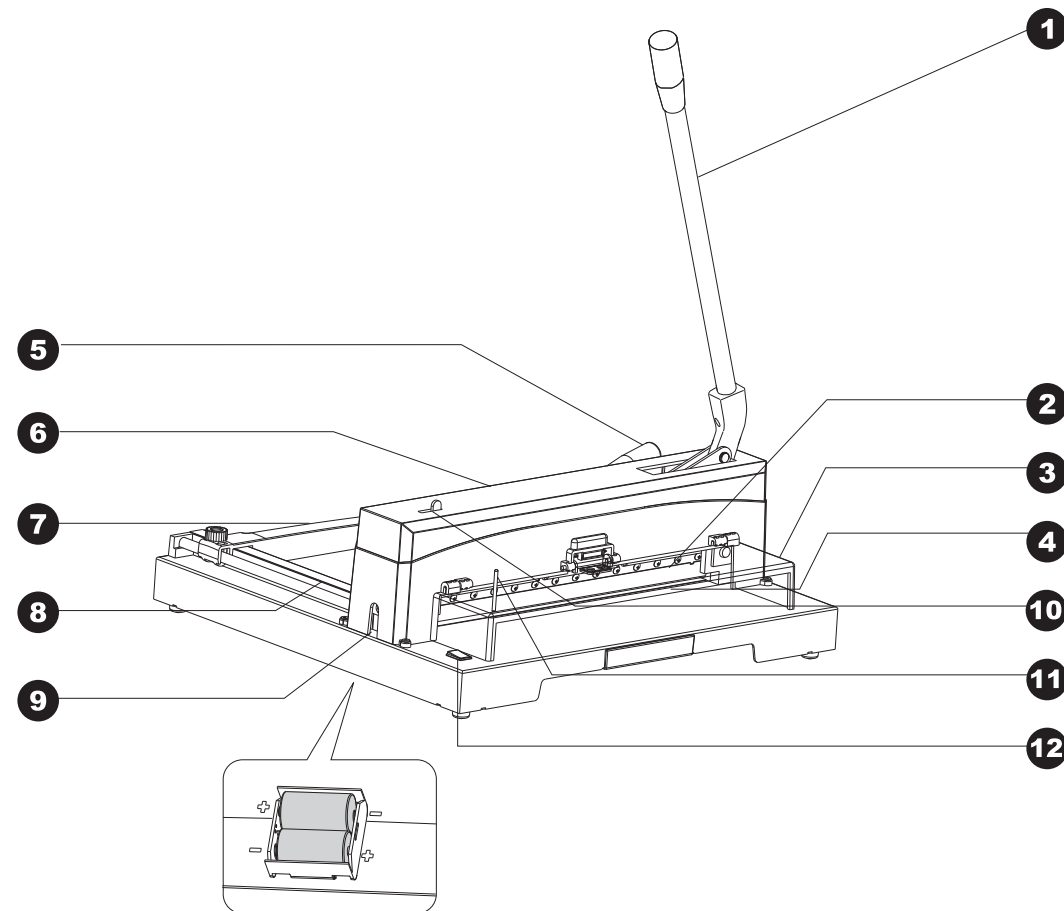
- (1) Put the knife lever to the top in the lock condition. And then, turn the lever counter clockwise to take it off.
- (2) Remove the screws on **a** in the corners of the cover.
- (3) Take off the cover, and return the knife lever back.
- (4) Use a screwdriver to remove the screws on **c** and **d**. Next, replace them with two knife holders, and tighten up.
- (5) Take out the screws on **b** and **e**. And then, loosen the knife holders with both hands to remove the blunt blade.

CONTENTS

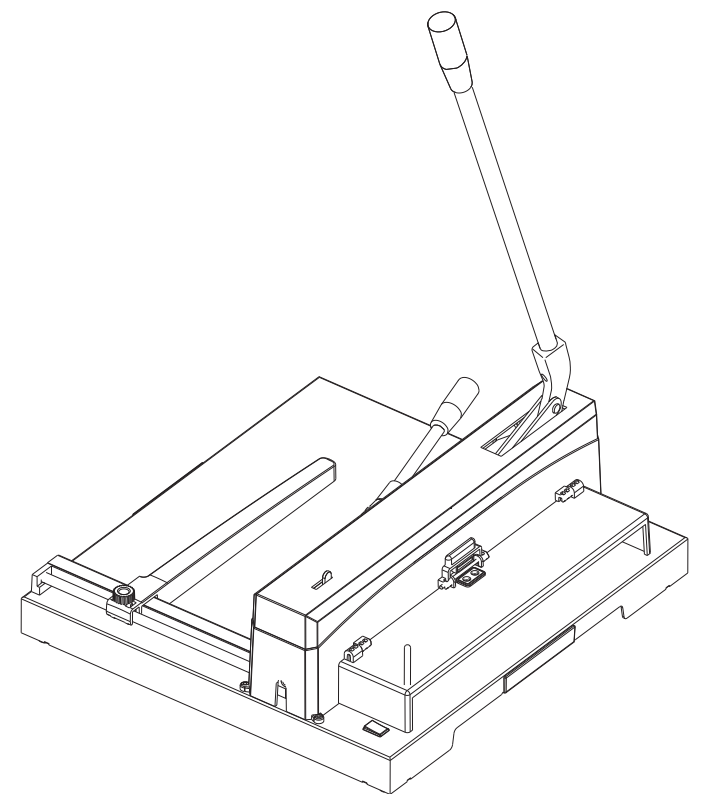
PAGE

ASSEMBLING DRAWINGS	2
SAFETY RULES	3
INSTALLATION	3
PERFORMANCE	3
OPERATING DESCRIPTION	3
OPERATION	4 - 5
BLADE REPLACEMENT	6
CUTTING STICK	6
LUBRICATION	6
KNIFE CHANGE	6
BLADE REPLACEMENT INSTRUCTION	7 - 9

ASSEMBLING DRAWINGS



-
- | | |
|------------------|---------------------------|
| ➊ Knife lever | ➎ Cover |
| ➋ Knife | ➏ Back gauge |
| ➌ Hand guard | ➐ Side gauge with scale |
| ➍ Cutting Stick | ➑ Knife adjustment device |
| ➔ Clamping lever | ➒ Knife lock |
| | ➓ Knife lock stopper |
| | ➑ Light switch |



User's Guide - Blade Replacement Instruction

BLADE REPLACEMENT

Please note: A dull knife does not cut accurately. The cutting of heavy paper or cardboard more often will blunt the blade easily. To keep a new spare blade on hand let work go. When you need to replace the blade, please do it correctly according to our instruction of blade replacement.

CUTTING STICK

If the last sheet of paper pile does not cut through, even though the knife adjustment ⑨ was already adjusted to the left +, the cutting stick ④ should be changed, turned or rotated. The cutting stick can be used two times on each side which means 8 changes per stick. The cutting stick 4 fits into the machine table and can be lifted out with the help of a screw driver.

✂ Please note: When the cutting stick is changed, the knife has to be readjusted.

A knife which cuts too deeply, not only damages the cutting stick, but also the knife, too.

LUBRICATION

All moving parts need to be lubricated and oiled from time to time. Before lubricating, these parts should be cleaned from paper dust and old deposits of oil and grease.

KNIFE CHANGE

Precise cuts are only possible with a sharp knife. The knife should be changed as soon as the quality and the accuracy of a cut are not in accordance with the standards expected from this cutting machine. If the knife should jam in the paper pile or leave grooves in the paper, the knife must be changed right away.

The knife change must be executed by one person only. The cutting edge of the knife is extremely sharp. In order to avoid injuries, the knife has to be handled with the utmost care.

NOTICE: Please do according to our blade replacement instruction.

SAFETY RULES

- Instruct the person working at the machine how to operate it.
- Take care that not more than one person is working at the same machine at the same time.
- The knife lever is moved down with both hands.
- After each cutting operation the knife lever is moved back to the starting position until the knife is locked.
- Do not disassemble the hand guard.
- Do not grasp underneath the knife edge.
- When changing the knife, strictly adhere to the instructions and use blade jig.

PERFORMANCE

- You can cut many varieties of paper and light cardboard (up to 150 sheets of 80 g/m² paper)
- Maximum cutting length : 370mm
- Maximum cutting height : 15mm
- Please be sure that the paper is free of metal parts such as clips and staples.

INSTALLATION

- The grip of the knife lever and clamping lever and screw are packed separately in a box with the machine. Please install these items right away.
- Fit two batteries (size C) into the battery holder.

OPERATION

The knife lever ① is locked at its top position.

Bring hand guard ③ up. Push the paper pile into the machine from the front and place it against the back gauge ⑦ and along the side gauge ⑧ on the left.

Push the back gauge ⑦ toward the knife until the paper measurement is reached and then fix the back gauge.

Switch the lever of the flick action clamping system ⑤ backward (near from operator).

When the flick action clamping device touches the paper pile, apply quick pressure to the handle and then let go. The paper pile is now secure.

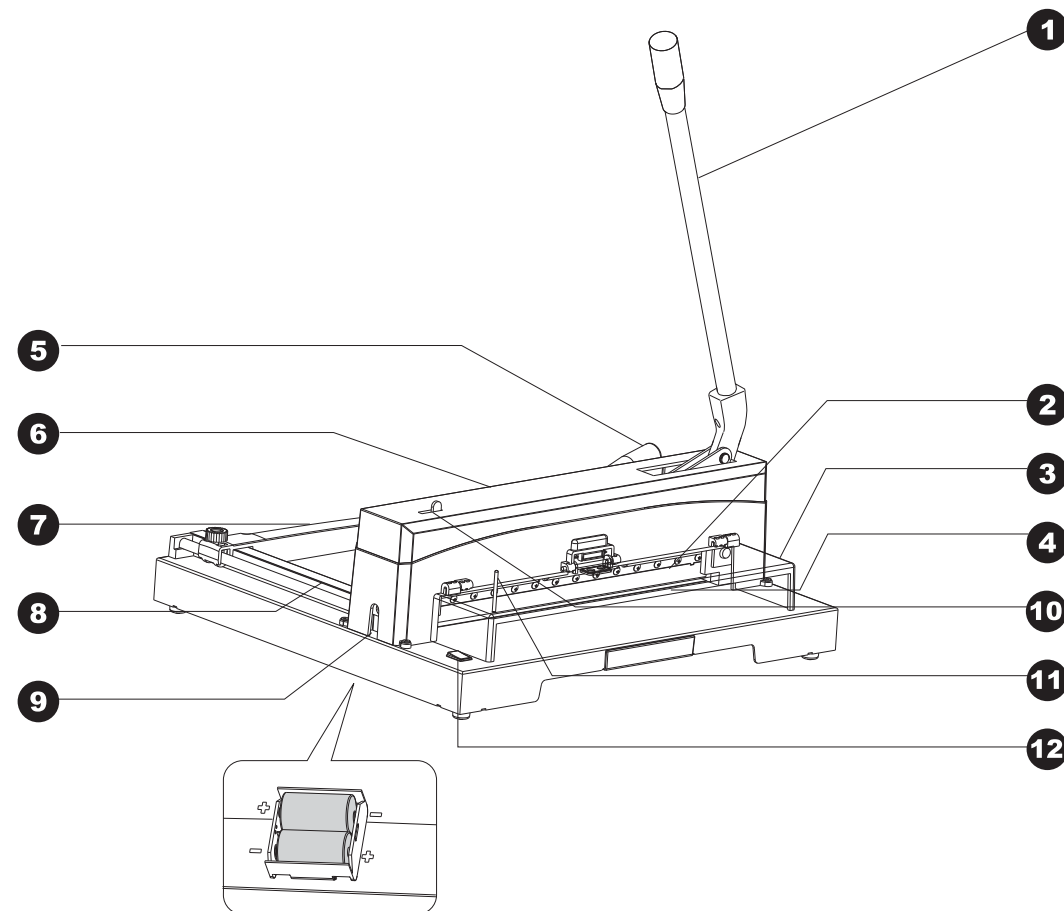
Bring down the hand guard ③

Release the knife lock ⑩ and bring down the knife lever ① by using both hands.

When the cut is complete, move the knife lever to its top position until it locks.

Release the hand lever of the flick action clamping system ⑤. Lift the hand guard ③ upwards and take the paper out of the cutter.

OPERATING DESCRIPTION



1 Knife Lever

Due to the optimal lever action, the **KW-triO** model 3943 enables cutting without effort.

A sharp knife is important for the best performance.

After each cutting operation the knife lever has to be returned to its top position until the knife lever is locked.

2 Knife

To be made of high carbon quality steel.

3 Hand Guard

The hand guard must be lowered before each cutting operation.

When opening the hand guard, the knife locker stop shaft on the hand guard will block the knife lock to be released. The knife lever can be operated only when the hand guard is lowered.

4 Cutting Stick

To be made of tough plastic, exchangeable. It can be used two times on each side.

5 Flick Action Clamping System

For holding the paper pile which has to be cut.

✗ Press clamping lever forward (far from operator): Flick action clamping system open.

✗ Press clamping lever backward (near to operator): Flick action clamping system close.

6 Cover

Attached to the machine with four screws. Disassembly only in case of knife change.

7 Back Gauge

Operated via Hands. For adjustment to the desired cutting size and for exact parallel of the paper pile to be cut.

8 Side Gauge with Scale

In mm/cm and inch. For rectangular placing of the paper pile. The indicator on the back gauge showing the measurement, which adjusts the scale of the side gauge.

Fine adjustment is done via the mm scale of the scale ring.

9 Knife Adjustment

The knife can be adjusted slightly by using the adjustment screw

✗ Turn to the left **+** : Knife adjustment downwards.

✗ Turn to the right **-** : Knife adjustment upwards.

Max. adjustment approx. 2mm

Please note: A knife which is adjusted to deeply does not only damage the cutting stick, but the knife itself. Optimal adjustment: when the last sheet is cut accurately.

10 Knife Locking Device

The knife locking device secures the knife in its top position. A cutting operation can only be carried through when the hand guard is in the down position and the locking device is released.

Caution: Do not place hands or fingers under blade if knife lever is not locked.

11 Knife Lock Stop-Shaft

When opening the hand guard, the knife locker stop shaft on the hand guard will block the knife lock to be released. The knife lever can be operated only when the hand guard is lowered.

12 Light Switch

Turn on the Light Switch, you can see a light showing the exact cutting position.